

Photo Printing Solutions



# CP-W5000DW

Double Sided Photo Printer



## Double sided printer & photo book service in minutes

While being compact, the CP-W5000DW offers speed, large paper capacity and multiple print sizes. It comes with Mitsubishi Electric one-of-a-kind paper path switching method, never before seen in a small-size duplex machine. **The CP-W5000DW is budget-friendly too.**

### Main features

- // Double side Printing
- // Power saving feature
- // Larger paper capacity
- // High Speed Printing
- // Compact design
- // Powerful
- // Multifunction printing and cutting



#### Double side Printing

The double and single sided prints in a same printer device. Double sided printing has a lot of possibilities for you to create many different printed products, with a great photo printing quality. And single side allows you the convenience of a unique printer that has it all.

#### Power saving feature

Designed to reduce power consumption in sleep mode by up to 96% vs precedent printer generations. Saves energy in sleep mode, reducing power consumption less than 1 watt.

#### Larger paper capacity

A big capacity roll allows to print up to 250 prints 20x30 cm (8x12").

#### High Speed Printing

The CP-W5000DW delivers up to 300 prints 20x25cm (8x10") double-sided, with a 20x25 cm (8x10") double side printed in 75.4 seconds (83.9 seconds in 20x30 cm - 8x12")

#### Compact design

With a reduced footprint 0,18m<sup>2</sup>, and a weight of 29kgs, the CP-W5000DW is engineered to produce the most brilliant photo prints quickly, reliably and economically, with a user-friendly front panel for status, remaining media, user notifications, etc.

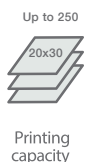
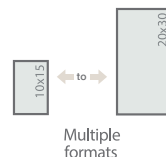
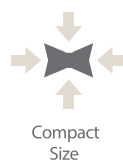
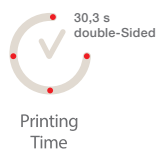
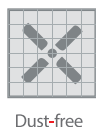
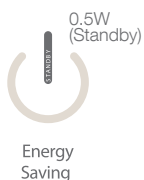
#### Powerful

While being compact, the CP-W5000DW offers speed, large paper capacity and multiple print sizes in one device. It comes with Mitsubishi Electric's one-of-a-kind paper path switching method, never before seen in a small-size duplex machine.

#### Multifunction printing and cutting

One media for all sizes. And double or single sided prints. So easy, the CP-W5000DW is a powerful printing unit itself. Set vertical and horizontal cutters to 10 different positions producing 13 different print sizes, up to 20x30 cm (8x12") print size.

### Features





## User-friendly

User-friendly front panel display and operation buttons allow you to easily check the status of the printer, remaining media, user notifications, etc.

### Easy operation



**S.D.OOR OPEN**  
Side door open

**PRINTING SIDE A**  
Printing on A side

**PAPER LEFT: 76%**  
Remaining paper

**INK LEFT: 49%**  
Remaining ink

Example of display

### Easy paper loading

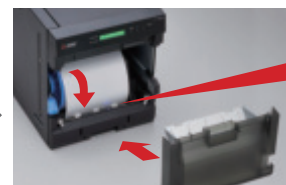
The paper can be easily changed without any complex operations. A blue lamp lights up next to the paper roll when paper is properly loaded/installed and ready for use.



1. Open the front panel door.



2. Remove the front panel door and insert the paper.



3. The lamp turns on when the paper is set. Close the front panel door.



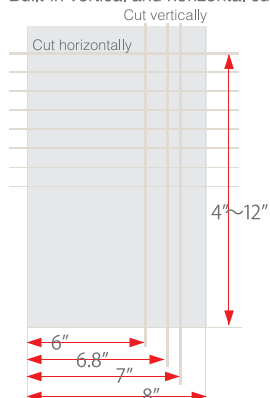
Blue lamp lighting

## Multiple Print Sizes

The CP-W5000DW provides dual-sided printing of multiple print sizes to cover a diverse range of on-demand photo finishing needs.

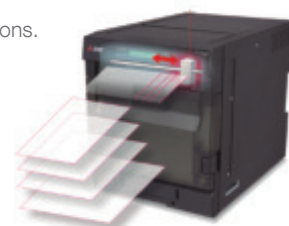
Paper size	(inch / mm)
1 8 × 12"	203 × 305
2 8 × 11.7"	203 × 297
3 8 × 11"	203 × 279
4 8 × 10"	203 × 254
5 8 × 8"	203 × 203
6 8 × 6"	203 × 152 *
7 8 × 4"	203 × 102 **
8 7 × 5"	178 × 127 *
9 6.8 × 9.6"	173 × 244
10 6.8 × 4.8"	173 × 122 *
11 6 × 12"	152 × 305
12 6 × 6"	152 × 152 *
13 6 × 4"	152 × 102 **

Built-in vertical and horizontal cutters

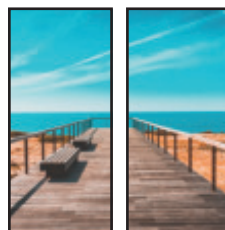


Move the built-in longitudinal cutter to four positions.

The vertical and horizontal cutters can be set to 10 different positions, producing 13 different print sizes. This provides the flexibility of multiple print-size options from just one printer, thereby offering maximum return with minimum investment.



Split format prints:



\* Maximum 2-UP

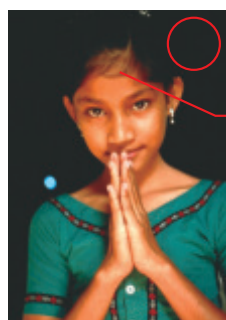


\*\* Maximum 3-UP

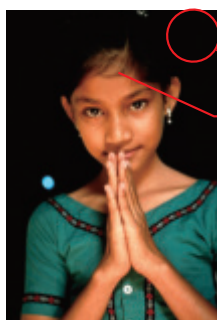
## Outstanding print quality

Much deeper black than before. The deep black color enables fine prints with depth.

Other Conventional Models



CP-W5000DW



Prints photos with remarkable clarity, vivid colors and high-quality finish.

Remarkable black level provides superior color depth and contrast.

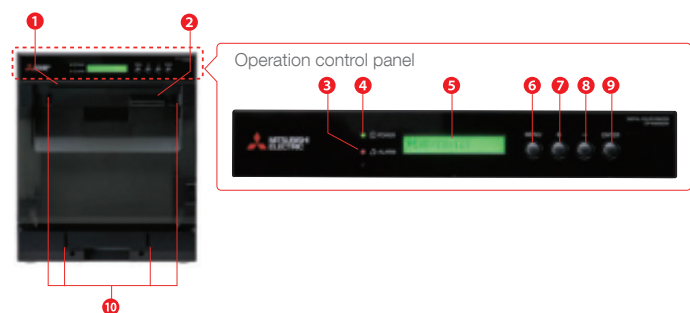


Clearer prints with no blurring even in fine lines and details. No deterioration or compromise of original image details.





## FRONT PANEL



- 1 Print output slot
- 2 Waste output slot
- 3 Alarm indicator
- 4 Power indicator
- 5 Liquid-crystal display LCD

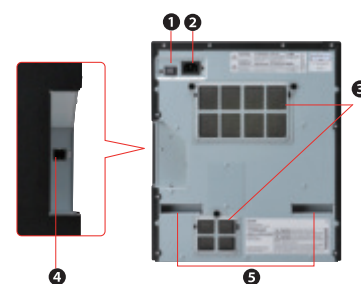
- 6 Menu button
- 7 + button
- 8 - button
- 9 Enter button
- 10 Mounting holes for exit paper tray

- 11 Top cover
- 12 Handles
- 13 Front cover bin
- 14 Slide door handle
- 15 Front release button



- 16 Slide door

## REAR PANEL



- 1 Power switch
- 2 Power socket (AC line)

- 3 Intake-air filter
- 4 USB terminal
- 5 Handles

## Consumable Parts



**Media reference**  
**CK5000**  
 1 paper roll/box  
 Maximum 250 sheets:  
 8x12" / 20x30 cm size



**Media reference**  
**PK5812**  
 2 ink ribbons/box  
 (250 duplex prints, 500 simplex prints:  
 8x12" / 20x30 cm size)

## Technical specifications

System compatibility	Windows/ Mac												
Printing Method	Dye sublimation thermal transfer full color. Three-color face progressive printing (yellow, magenta, cyan) plus surface lamination												
Print options	Dual-sided printing												
Print formats	10x10 cm, 10x15 cm, 13x18 cm, 15x30 cm, 17x12 cm, 17x24 cm, 20x10 cm, 20x15 cm, 20x20 cm, 20x25 cm, 20x28 cm, 20x29.5 cm, 20x30 cm (4x4", 4x6", 5x7", 6x12", 6.8x4.8", 6.8x9.6", 8x4", 8x6", 8x8", 8x10", 8x11", 8x11.7", 8x12"). Depends on media used. Please, check Media section on our website.												
Memory capacity	128Mb												
Photo finishing	Matte/Glossy												
Media performance	<table> <thead> <tr> <th>Print Size</th><th>Print time</th></tr> </thead> <tbody> <tr> <td>20x30 cm (8x12")</td><td>83,9s</td></tr> <tr> <td>20x25 cm (8x10")</td><td>75,4s</td></tr> <tr> <td>20x20 cm (8x8")</td><td>69,4s</td></tr> <tr> <td>18x13 cm (7x5")</td><td>39,4s</td></tr> <tr> <td>15x10 cm (6x4")</td><td>30,3s</td></tr> </tbody> </table>	Print Size	Print time	20x30 cm (8x12")	83,9s	20x25 cm (8x10")	75,4s	20x20 cm (8x8")	69,4s	18x13 cm (7x5")	39,4s	15x10 cm (6x4")	30,3s
Print Size	Print time												
20x30 cm (8x12")	83,9s												
20x25 cm (8x10")	75,4s												
20x20 cm (8x8")	69,4s												
18x13 cm (7x5")	39,4s												
15x10 cm (6x4")	30,3s												
Print capacity	Up to 300 prints 20x25cm (8x 10") double-sided.												
Print speed (10x15cm - 4x6")	20x25cms (8x10") dual side printed in 75.4 seconds (83.9 seconds in 20x30cm - 8x12")												
Media	CK5000 (paper) PK5812 (Ink ribbon)												
Resolution	300 dpi												
Weight	29kg (64.0lb.)												
Dimensions W/D/H	342 / 795 / 402 mm												
Foot print	0.18 square meters (excluding paper tray)												
Power consumption	2.4A (220-240VAC, 50/60Hz.) / 5.5A (120VAC, 50/60Hz.)												
Accessories	Power cords (for 120V and 230V), ink cassette (1), paper flanges (1set), exit paper tray(1), bracket for exit paper tray (1), exit waste bin (1), CD-ROM (1) quick setup guide (1)												

Specifications are subject to change without notice.