

Photo Printing Solutions



CP-D90DW-P

Photo Printer





Fast, top print quality & multiformat - the top model from Mitsubishi

The CP-D90DW-P is a compact dye sublimation printer that with its small footprint design requires minimal installation space. Thanks to its rewind system the users can now produce two different print sizes from just one media without any wastage! No need to change the media to print 4x6 or 6x8. Dedicated media allows to get the fastest printing speed, including a new air-cooling mechanism which provides one of the best printing throughputs of the market.

Main features

- // Rewind function
- // Power saving feature
- // Multiformat
- // Fast and powerful
- // Compact design
- // Low Maintenance and High Reliability
- // Perforated and postcard media



Rewind function

When the last half part of the ribbon patch is not used in the last order it can be capable for next printing order of 10x15 cm (4x6"). Fine mode doesn't allow Rewind function.

Power saving feature

Standby power reduces to less than 1 watt the electric power consumption while printer is switched off or in a standby mode.

Multiformat

The CP-D90DW-P has a very powerful multiformat capabilities from 5x15 cm to 15x51cm (2x6" - 6x20") combining many Media references from Mitsubishi Electric's range.

Fast and powerful

From 7.8 seconds for 10x15 cm (4x6") printing and 430 prints per hour, it's a powerful printer suitable for photobooth, events and many other photo business needs.

Compact design

Just 0.10m2 footprint for highest quality in the smallest and compact design to fit almost anywhere.

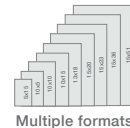
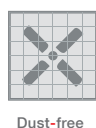
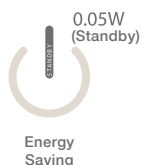
Low Maintenance and High Reliability

Dust proof and new airflow design delivers a high reliability and increases the throughput while reducing print contamination.

Perforated and postcard media

Perforated media references, Postcard Media, wide format with standard media... CP-D90DW-P is a true multiformat printer.

Features

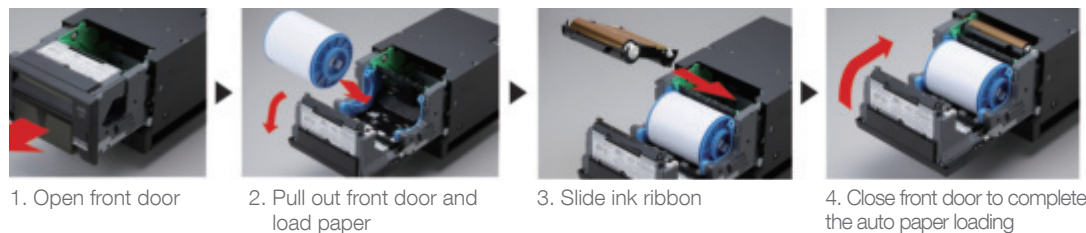




User-friendly

CP-D90DW-P is designed for ease of use and quick maintenance with front-loading design for media.

Easy Media Loading



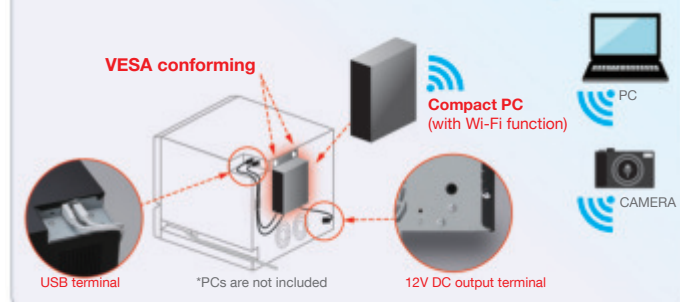
Maintenance



- An energy-saving mode helps save operational cost by minimizing power consumption when on stand-by
- Long-life thermal head built with a coat of extra protective layer provides longevity and durability to minimize the total cost of ownership.
- Flanges attach easily to the paper roll by a quick pinch of latches.

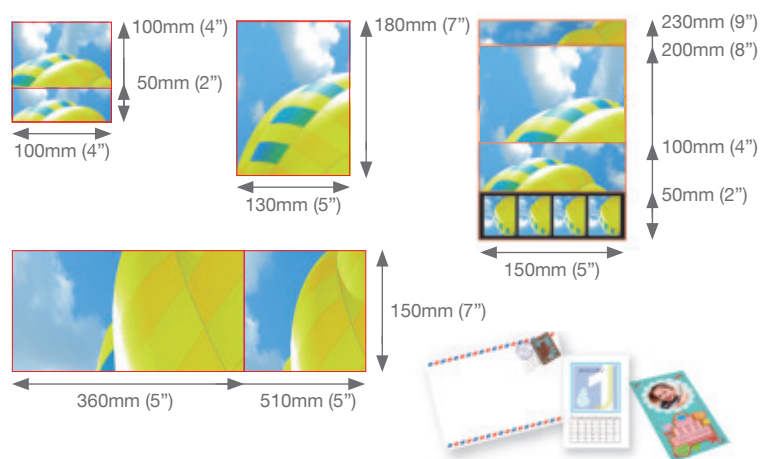
System Flexibility

With available DC output terminals of 5V 2A and 12V 2A, small, low-powered computer like Stick PC, or mobile devices can easily be powered through the printer, supporting a broader range of possible applications such as wireless printing, helping build a cost-efficient printing station more easily.



Multiple Sizes

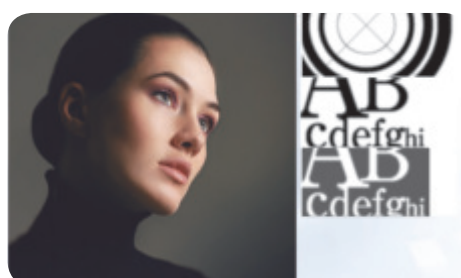
Supports various print sizes using a Software Development Kit to customize applications. More than 51mm(2") toward paper feeding direction, 1 dot step.



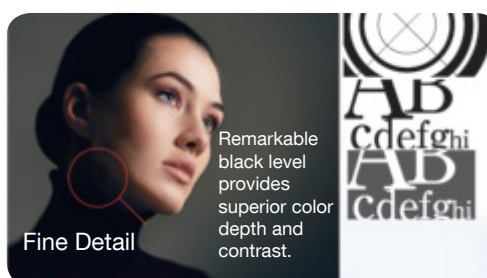
Outstanding print quality

Mitsubishi Electric's CP-D90DW-P comes with an Image Analyzing Engine built-in to enable faster printing without compromise on image quality. Each image received is built and analyzed within the printer processor with its print density and details analyzed and printed accordingly, yielding the best result with every photo printed.

Conventional Models



CP-D90DW-P

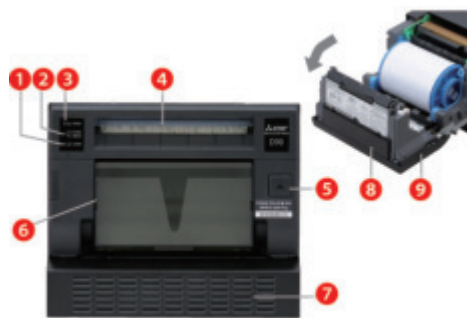


Prints photos with remarkable clarity, vivid colors, and higher quality finish.

Clearer prints with no blurring even in fine lines and details. No deterioration or compromise of original image details.

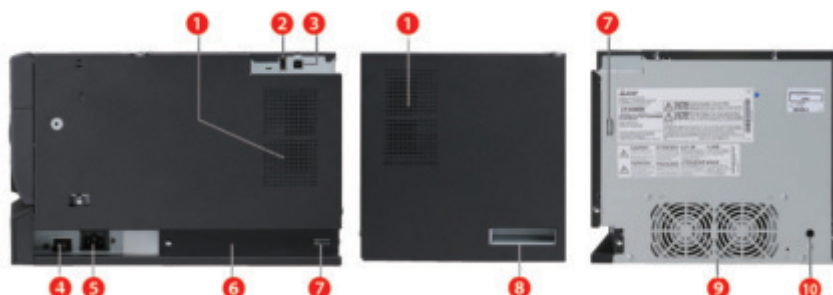
FRONT PANEL

Opening the door



- 1. Alarm indicator
- 2. Paper ribbon indicator
- 3. Power indicator
- 4. Print outlet
- 5. Open button
- 6. Paper strip bin
- 7. Ventilation inlet
- 8. Printing unit
- 9. Door

REAR PANEL

Panel
(Right, Full View)Panel
(Left, Partial View)

- 1. Ventilation inlets
- 2. 5 v dc Output terminal usb type-a (2 a max.)
- 3. USB terminal
- 4. power switch
- 5. Power socket (ac line)
- 6. Recessed area for transporting
- 7. Securing holes for the cable tie
- 8. Handle for transporting
- 9. Ventilation outlets
- 10. 12 v dc Output terminal (2 a max.)

Technical specifications

System compatibility	Windows/ Mac
Printing method	Dye sublimation thermal transfer full color. Three-color face progressive printing (yellow, magenta, cyan) plus surface lamination
Print options	Single-sided printing
Print formats	Multi formats / variable cut 5x15 – 15x51cm (2x6" - 6x20")
Memory capacity	128MB Volatile Memory for Temporary Retention
Photo finishing	Matte/Glossy
Print capacity	Up to 430 prints / 10x15 cm
Print speed (10x15cm - 4x6")	Printing Time 7.8 s
Available Software Drivers	Windows® 7/8/10 (32 bit/64bit), Mac®OS 10.6-10.11
Media	CK-D746, CK-D715, CK-D718, CK-D720, CK-D723, CK-D769, CK-D820, CK-D757, CK-D768, CK-D868, CK-D715-PF42, CK-746-PF42, CK-746-PF33, CK-D946PST
Resolution	300 dpi
Weight	14kg (30.0lb)
Dimensions W/D/H	275 / 365 / 237 mm
Foot print	0.10 square meters
Power consumption	4.6A (120VAC 50/60Hz), 2.4A (220-240VAC 50/60Hz)
DC Output terminals	12V / 2.0A max - 5V / 2.0A max
Accessories	Paper flange(1), Paper Flange spacer(1), Ink cassette(1), Paper strip bin(1) Paper Tray, AC power cord(120V), AC power cord(220-240V)(1),CD-ROM(1) Cable ties(2), Securing band/Screws/Washer(1set), Quick set up guide(1)

Specifications are subject to change without notice